

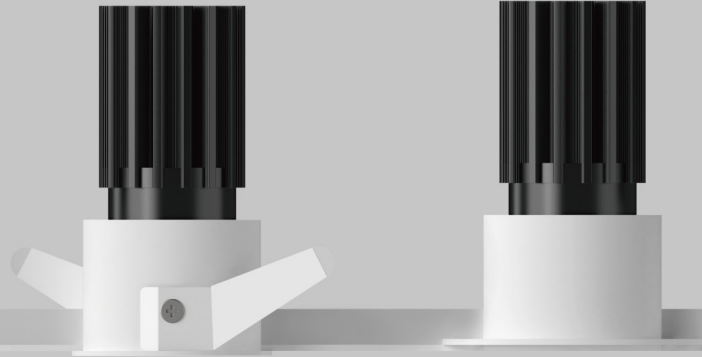
GENII Round IP44



GENII Family

GN45-R44QS

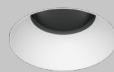
GN45-R44QT



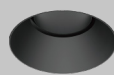
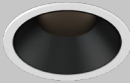
With Trim

Trimless

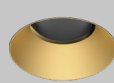
White



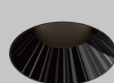
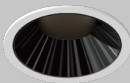
Black



Golden



Black Mirror



GN45-R44QS



GN45-R44QT



Basic Information

| | |
|----------------------|--|
| Model | GN45-R44QS/R44QT |
| Embedded Parts | With Trim/Trimless |
| Mounting | Recessed |
| Trim Finishing Color | White/Black |
| Reflector Color | White/Black/Golden/Black Mirror |
| Material | Cold Forged Pure Alu. (Heat Sink)/Die-casting Alu. |
| Cutout Size | 45mm |
| Light Direction | Fixed |
| IP Rating | IP44 |
| Power | Max. 10W |
| Input Voltage | DC36V |
| Input Current | Max. 250mA |

Optical Parameters

| | |
|-----------------|-----------------------------|
| Light Source | LED COB |
| Lumens | 65lm/W 90lm/W |
| CRI | 97Ra |
| CCT | 3000K ● 3500K ● 4000K ○ |
| CCT Changeable | 2700K — 6000K 1800K — 3000K |
| Beam Angle | 15° 25° 35° 50° |
| Shielding Angle | 50° |
| UGR | < 13 |
| LED Lifespan | 50000hrs |

Driver Voltage AC100-120V AC220-240V

Driver Options ON/OFF DIM TRIAC/ PHASE-CUT DIM 0/1-10V DIM DALI